

The DERC SSB is easy to disassemble in smaller/shorter pieces for easy transportation.

### FEATURES

- + A-Frames with manual height adjustment
- + Coupled stainless steel profile
- + Chains with tensioner to fix A-Frame to bundle rollers
- + DERC Automatic Solutions Rail 4" with gear rack
- + DERC AST air or hydraulic powered tractor
- + DERC RCS 200 with 1500 bar air or hydraulic powered swivel
- + Set of nozzles

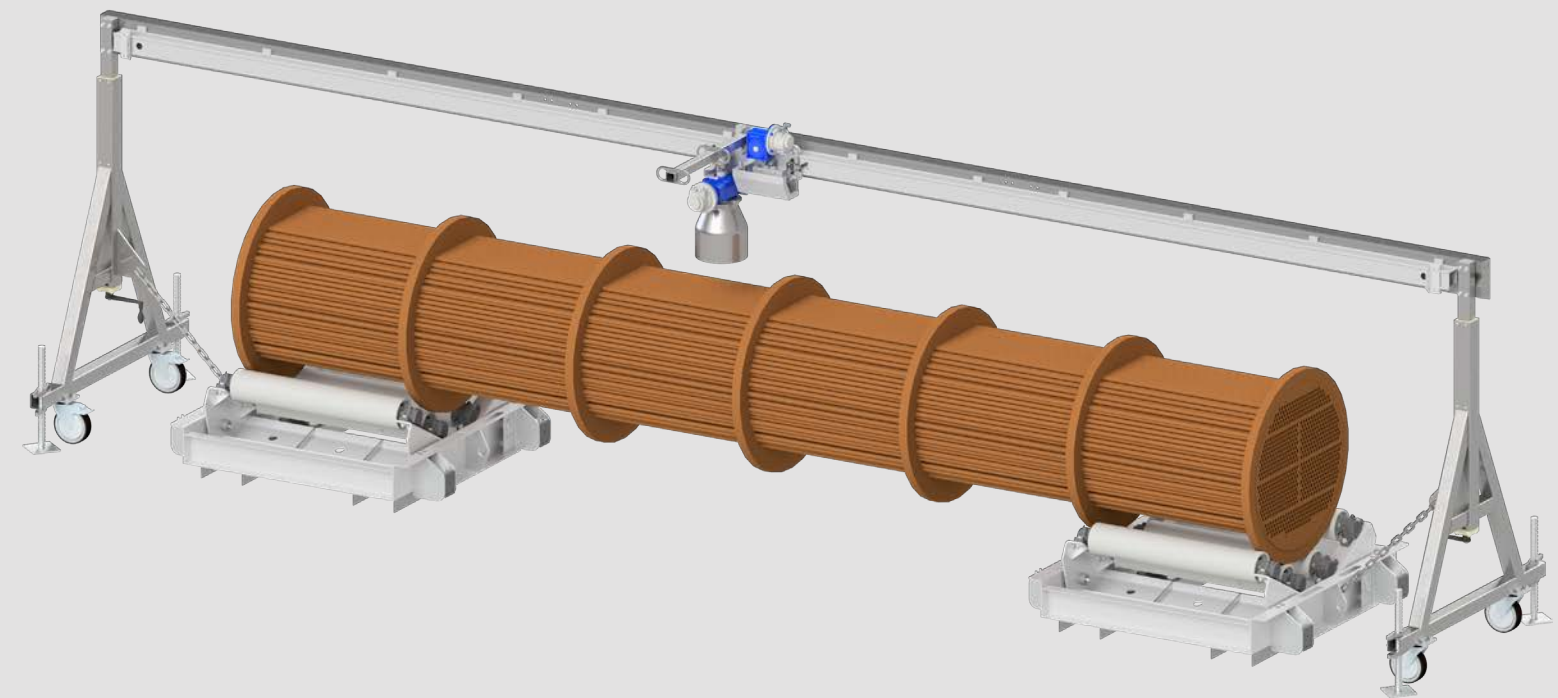
The DERC SSB is configured to order, please contact us about your specific requirements for pressures, lengths, speeds, hydraulic drive, etc.

### SPECIFICATIONS

Total Length	8000 mm*		
Stroke	7500 mm*		
Max. Tube Bundle Length	7500 mm		
Height Adjustment Frame	500 mm		
Max. Operating Pressure	1500 bar / 22 KPSI		
Max. Flow	1000 bar	380 l/min	
	1500 bar	300 l/min	
Inlet Connection	M36 x 2 male / M24 x 1,5 / 3/4" NPT		
Movement Speeds	2 - 12 m/min / 7 - 40 ft. / min		
RCS 200 Rotation Speed	+/- 500 rpm		
Nozzle Inserts	2 x Type 4	or	2 x Type 226 or 2 x 1/4" NPT 1 set nozzles included
Control Panel	Start-Stop-Speed Movement		
	Start-Stop-Speed Rotation		
	Air Hoses and Air Preparation Oiler / Filter included		

\* other lengths / strokes possible

DERC SALOTECH – ORIGINAL EQUIPMENT MANUFACTURER AND SUPPLIER OF INNOVATIVE HIGH PRESSURE WATER JETTING SOLUTIONS, AUTOMATED EQUIPMENT AND ACCESSORIES. WE PROVIDE STATE OF THE ART KNOWLEDGE AND SERVICES.



## DERC Shell Side Blaster SSB

- + SIMPLE AND SAFE
- + ADJUSTABLE HEIGHT
- + EASY TO USE AND TRANSPORT
- + MULTIPLE NOZZLE OPTIONS

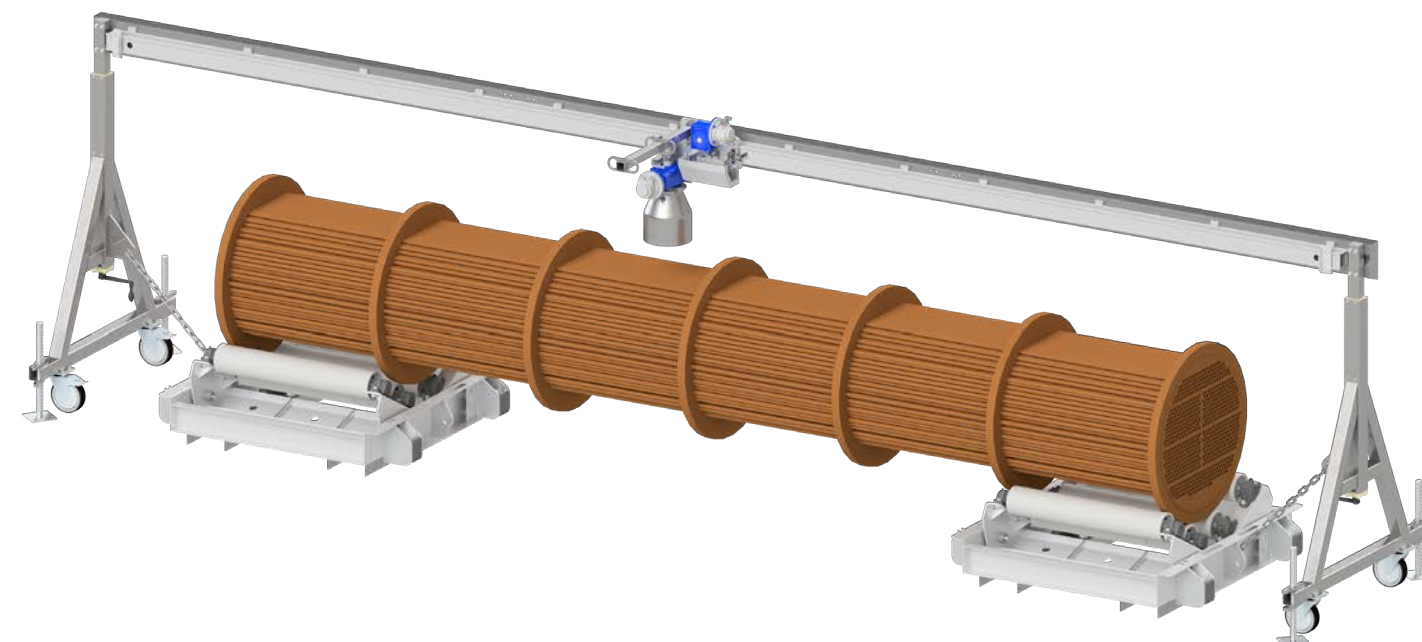
MADE BY  
**DERC**

# DERC Shell Side Blaster, SSB

The DERC SSB is designed and manufactured by DERC Salotech as an automated solution for external cleaning of heat exchangers with high pressure water jets. The DERC SSB makes tube bundle blasting of shell side cleaning simple and safe by placing the operator at a safe distance. The DERC SSB consists of two wheeled frames, which can be placed over the heat exchanger, and adjusted in height by means of two manually operated hand wheels. The system comes with two tensioner chains to secure the frames to your tube bundle rollers.

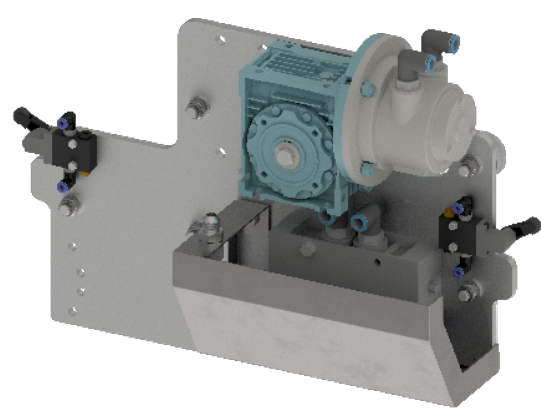
## AUTOMATED SOLUTIONS TRACTOR

Mounted between the frames is a stainless steel coupled profile with a 4" Automated Solutions Rail attached. The DERC Automated Solutions Tractor (AST) runs on the Automated Solutions Rail. The DERC AST moves back and forth over the DERC Automated Solutions Rail (ASR) automatically. This is realized by means of a gearbox, air or hydraulic engine, gear and heavy duty stainless steel roller bearings. End switches coupled to a control valve ensure the automatic movement back and forth. The stroke can be easily adjusted by moving the end stops.



### FRAME

- Simple A-Frames to position above a heat exchanger
- + Stainless steel construction
- + Adjustable in height
- + Easy to move
- + Comes with chain tensioner



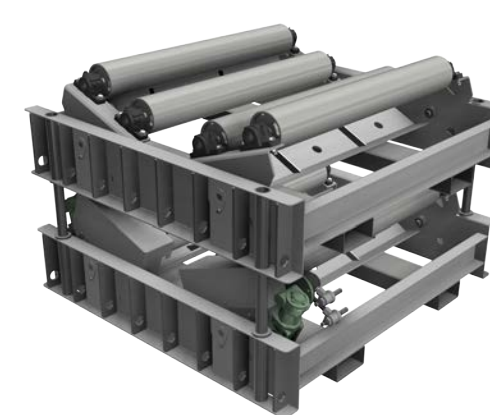
### DERC AUTOMATED SOLUTIONS TRACTOR, AST

- + Air or hydraulic powered
- + Easy to control linear speeds
- + Possible upgrade to PLC control
- + Suitable for 4" aluminium rails



### DERC RCS 200-A

- + Adjustable speed
- + Available with different nozzle heads and nozzle options
- + Guard around the rotating nozzle head
- + Hose guide
- + Various nozzle options
- + Air or hydraulic powered rotating cleaning assembly
- + Max. working pressure 1500 bar



### DERC TUBE BUNDLE ROLLERS

- + Air powered
- + Stainless steel frame galvanized rollers
- + Option on tracks for easy movement
- + Pivoting rollers for optimal grip