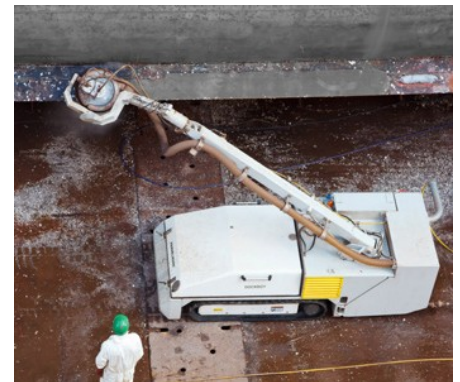
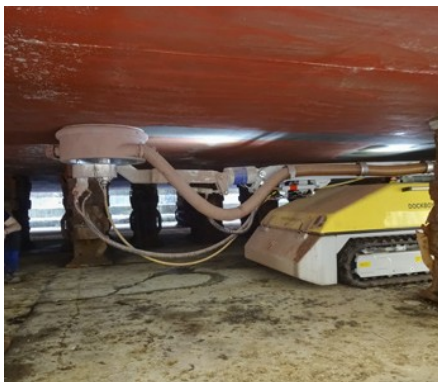


DOCKBOY

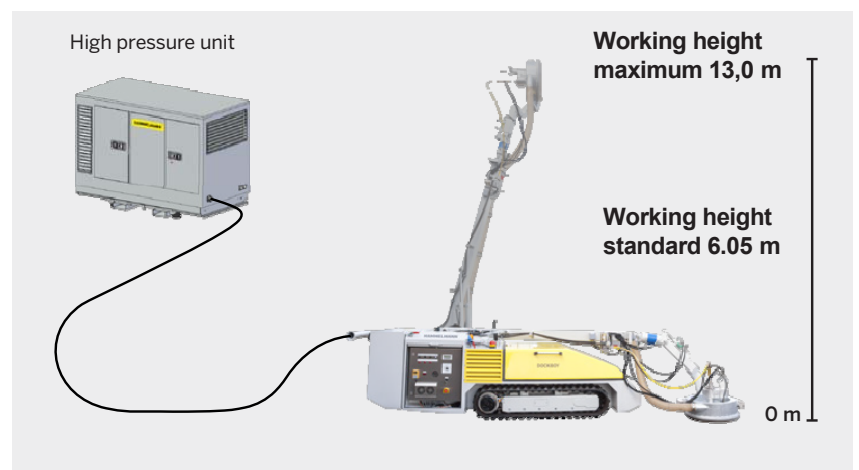
Semi automatic surface preparation

CALDER



In combination with direct vacuuming, it ensures eco-friendly rust removal and old coating removal with waste and waste water collection.

- Designed to treat flat areas such as:
- Ship hull bottoms, all kinds of curvatures, superstructures up to a height of approx. 6.05 m (19.8 ft)
Optional working height approx. 13 m (42.7 ft)
- Can be used on ship decks, car and cargo decks and other flat floors
- For work on ship hull bottoms, the minimum vehicle height is just 1.26 m (4.13 ft)
- Vehicle height lower than the most common keel blocks (mostly 1.5 m (4.9 ft) or higher)
- Work functions are automated and adjustable to a great extent



Up to 3,000 bar

HAMMELMANN®

DOCKBOY



Filter/disposal module for waste and waste water with 70µ up to 200µ filter mesh size.



The hydraulic system uses biodegradable oil.

Standard
6.05 m working height

Working height: 0 – 6,05 m
Vehicle height: 1,26 m
Vehicle width: 1,48
Transport length: 6,30 m
Weight: 5,0 t

Option
13 m working height

Working height: 0 – 13 m
Vehicle height: 1,26 m
Vehicle width: 1,48 m
Transport length: 6,50 m
Weight: 5,2 t



The work functions are to a great extent automated and adjustable so that ship hull curvatures, decks and superstructure surfaces can be blasted. Programmable indexing distance and slewing range.



Arc width:
Standard: 4,60 m
13-metre working height option: 5 m

Calder Ltd
Prescott Drive
Worcester
WR4 9NE
United Kingdom

+44 1905 751790
sales@calder.co.uk
www.calderltd.com

CALDER

HAMMELMANN®