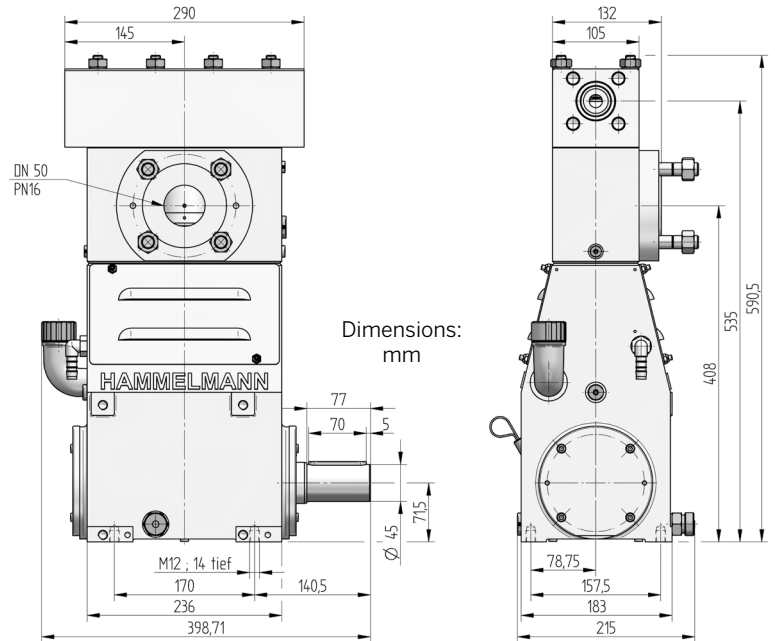


# HAMPRO® 10 Process plunger pump



Hammelmann process pumps are built to operate at the continuous maximum duty stated in the performance parameters. Just compare the crankshaft speed, average plunger speed, plunger diameter and power rating.



## Technical details HAMPRO® 10

Operating pressure	Flow rate	Design	Weight
up to 2300 bar	up to 6,2 m <sup>3</sup> /h	Vertical 3 cylinder design	~ 94 kg

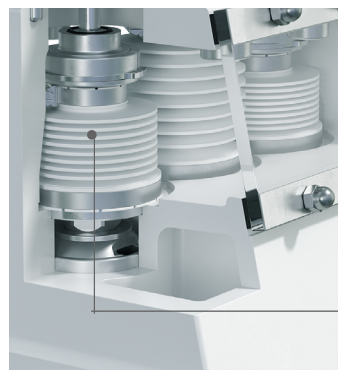
Weight and dimensions refer to the pump only, without accessories. Detailed dimensional drawings and weights on request.

## Quality and reliability

- Crank section calculation by 'Finite element method' ensures long working life under continuous load
- Stainless steel pump head free of alternating stress
- Bellows form hermetic seal between the suction chamber and crank section
- Large selection of materials available for different fluids
- Minimum crankshaft speed: 37 r.p.m.

## Features

- Power ratings up to 11 kW
- Vertical 3 cylinder design



## Zero Emission



TA-Luft, (Clean Air)  
certified to VDI 2440

In the Zero Emission design the pumped fluid is hermetically sealed within the pump preventing leakage to atmosphere during operation.

The bellows system is gastight.



