

Jetboy & Jetmate

Ergonomic Waterjetting Tools



High absorption of recoil forces ✓

Reduced operator fatigue ✓

Increased operator safety ✓

Easy transport and set-up ✓

Floors, walls & overhead ✓

CALDER

HAMMELMANN®

Jetboy

The JETBOY enables work almost without fatigue.
This results in a noticeable increase in work rate.

Mechanical assistance for manual gun work on

- Ceilings, supports (bridges, multi storey car parks)
- Floor surfaces (removal of expansion joints and markings)
- Hard to reach areas for border preparation

Overhead cleaning and removal operations



Manual blasting gun work

Reaction force free working with JETBOY device. The reaction force (N) is taken by the selected water tool holding device.

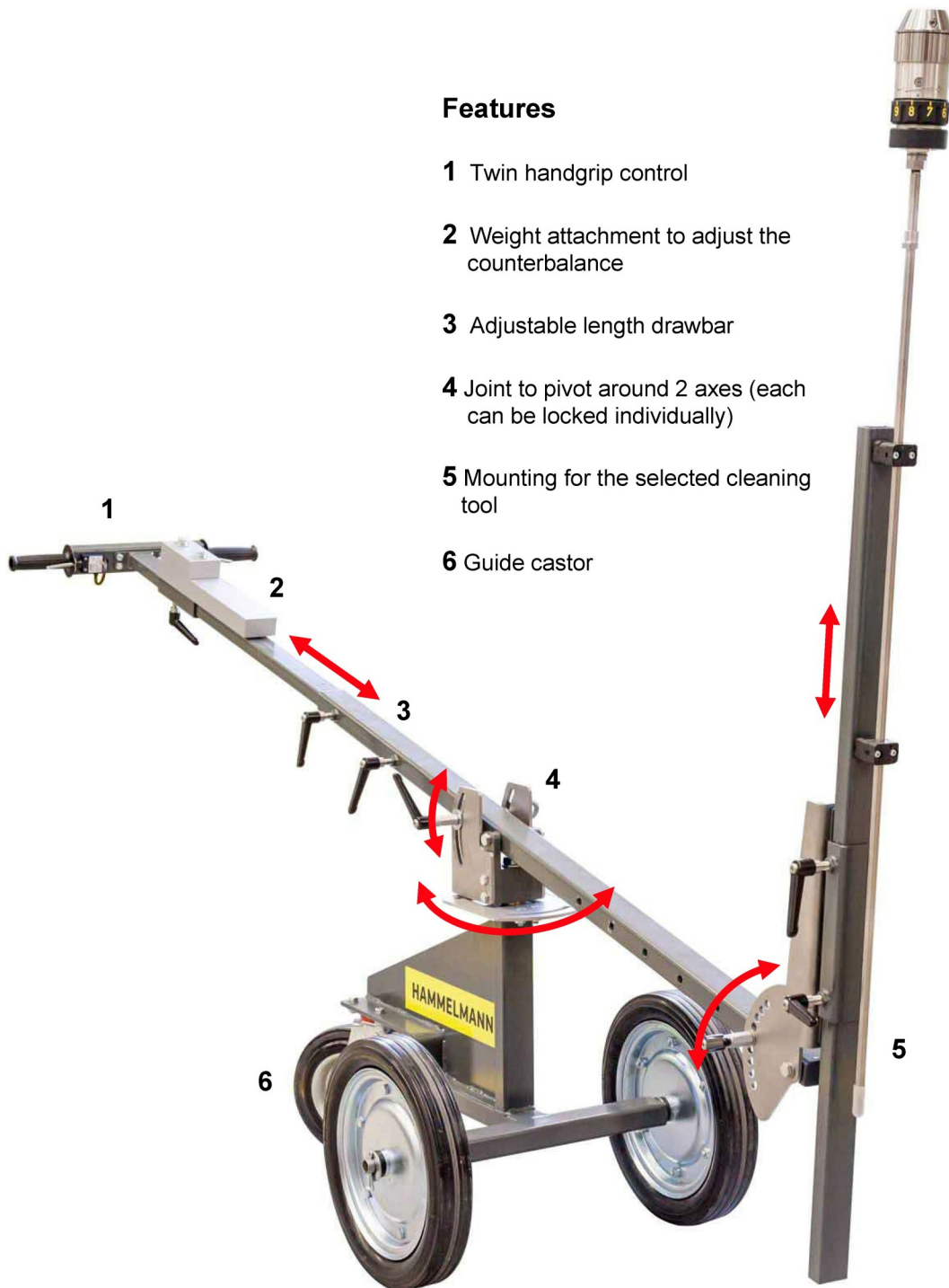


Cleaning and removal operations on the floor

Jetboy - continued

Features

- 1 Twin handgrip control
- 2 Weight attachment to adjust the counterbalance
- 3 Adjustable length drawbar
- 4 Joint to pivot around 2 axes (each can be locked individually)
- 5 Mounting for the selected cleaning tool
- 6 Guide castor



Picture of JETBOY with a cleaning tool selected for an application.

The lance and Rotorjet shown are not included in the JETBOY scope of supply.

Jetboy - optional accessories



Swivel lance carriage

Facilitates a pendulum motion of the lance for cleaning floors and ceilings



CALDER

HAMMELMANN®

Jetboy - optional accessories - continued



Aquablast

Working width: 215 – 500 mm
Operating pressure: 3000 bar

Standard accessories

- Rotor jets
- Round jets
- Fan jets
- High pressure lances

Jetboy S

Ergonomic waterjetting tool with adjustable handle and variable working height for a secure stand when working overhead.

Due to the improved ergonomics of the Jetboy S, you can work overhead for longer periods of time and with greater concentration – this increases safety and economy at the same time.

The modular structure of the Jetboy S allows you to easily change the working height without the need for tools and to quickly adjust to the operator's working posture. Masterjet rotor jets and high-pressure hoses are separately available.



**High ergonomics
and safety**

**Absorption of recoil forces
up to 350 N**

**Optimal adaptation
to operator and environment**

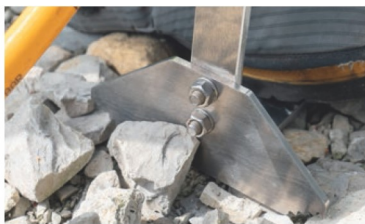
PRODUCT ADVANTAGES

- High safety standard due to internal high-pressure hose that is encapsulated by means of a guide tube
- There is no risk to the operator if the high-pressure hose fails
- The high-pressure hose is mounted on pivotable bearings in the guide tube
- Can be used for a recoil of a maximum of 350 N (no body support)
- Handle made of shock-resistant plastic with a second handle
- Hammelmann special trigger for approximately 80% less force required and less physical load
- Built-in Reed switch for 24 VDC control signals; can also be used in intrinsically safe Ex (i) electric circuits
- Safety lever to prevent accidental switching to high-pressure

CALDER

HAMMELMANN®

Jetboy S - continued



Areas of application

You can use Jetboy S for manual high-pressure blasting work (washing, cleaning, and removing) at up to 3200 bar on substructures and ceilings with the jet recoil being directed to the floor by means of a support.



Technical data – Jetboy S

Max. operating pressure 3200 bar;
in accordance with high-pressure hose used
Max. flow rate (at delta p 5 bar): 30 l/min.
Hose connection: M 14 x 1,5 LH
Overall length: 1462 mm

Weight (with high-pressure hose) : 6,8 kg
Connection thread for the high-pressure tool: M14 x 1,5 LH
Min. working height: 2100 mm
Max. working height: 2800 mm

CALDER

HAMMELMANN®

Jetboy XL

Ergonomic high-pressure water tool mount with adjustable operating handle and variable working height for a safe stand during high-pressure work.

The simple, tool-free adjustment of the working height enables a quick adjustment of the work position for each respective operator and allows perfect adaption to the working conditions. High-pressure water tools and high-pressure hoses are optionally available.



**Great ergonomics
and safety**

**High absorption of
recoil forces**

**Optimal adaptation to
individual operator
and work environment**

PRODUCT BENEFITS

- Recoil compensation through counterweight in the water pipe ensures ergonomic work
- Adjustable drawbar for more stability
- Height-adjustable fixture for the spray gun offers a wide variety of working positions
- Water tanks serve as a simple leveling device
- Max. maneuverability thanks to free guidance over three axes
- Easy to transport on site
- Easy set-up
- Compatible with optional high-pressure spray gun SP 3200

CALDER

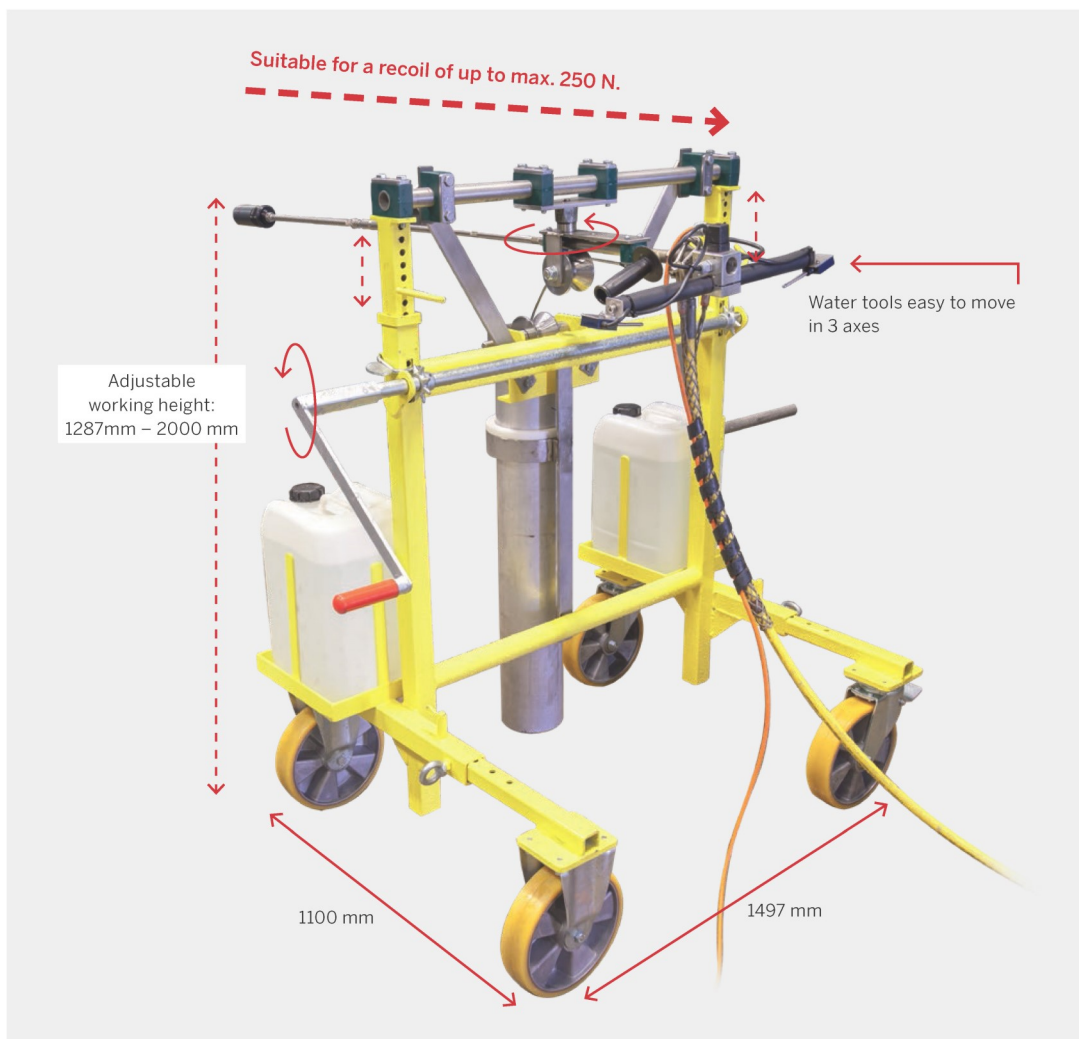
HAMMELMANN®

Jetboy XL - continued



Field of application

The Jetboy XL is suitable for high-pressure blasting work (washing, cleaning and removal) up to 3200 bar. The jet recoil of the water tool is compensated for using a safe stand and counterweights and makes changing the distance and rotation equally convenient. Hoses and water tools are optionally available.



Technical data – Jetboy XL

Total length : 1100 x 1287 x 1497 mm
 Total weight including water filling and ballast tanks: 192 kg
 Connection thread for the high-pressure tool: M 14 x 1,5 LH
 Min. working height: 1287 mm
 Max. working height: 2000 mm

Technical details for optional high-pressure water lance:

Max. operation pressure: 3200 bar,
 or according to the high pressure hose used.
 Max. flow rate: 30 l/min.
 Hose connection: M 14 x 1,5 LH

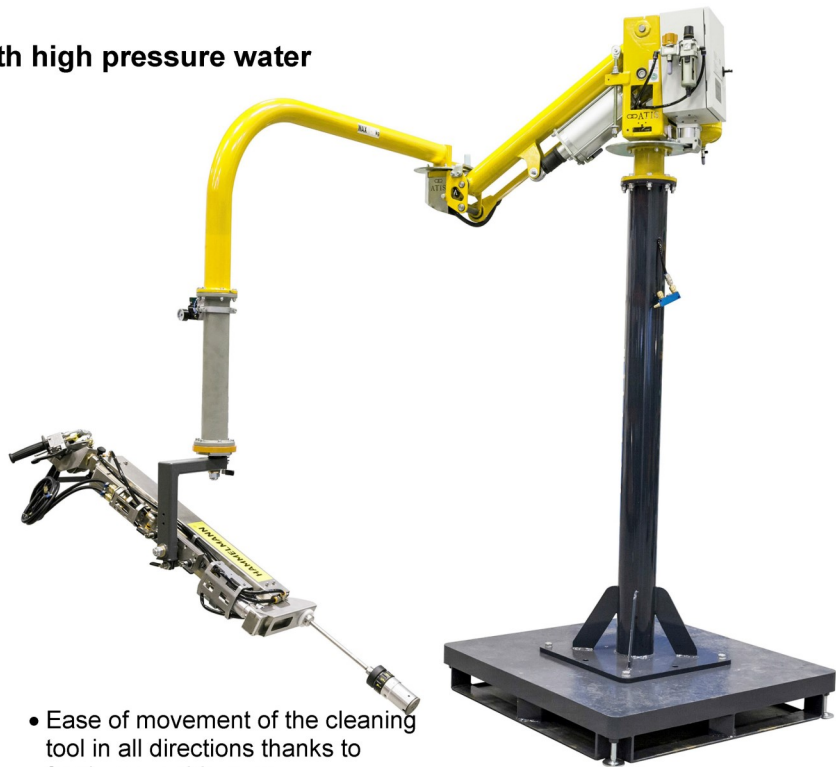
CALDER

HAMMELMANN®

Safe and ergonomic work with high pressure water

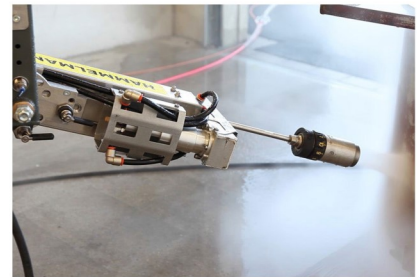
Simple handling and increased safety at work, these are the demands in the modern working environment. To meet these requirements it is our policy to continuously develop our high pressure systems.

The JETMATE enables reaction force free working during the cleaning process, is easy to handle and provides increased safety.



- Ease of movement of the cleaning tool in all directions thanks to freely moveable axes
- Weight relief by pneumatic cylinder compensation of manipulator system
- Suitable for standard gun barrels
- Pneumatic deployment module to advance and retract during blasting
- Attachment flange to load bearing devices

The reaction forces (N) are absorbed into the ground by the holding device.



Manual blasting gun work

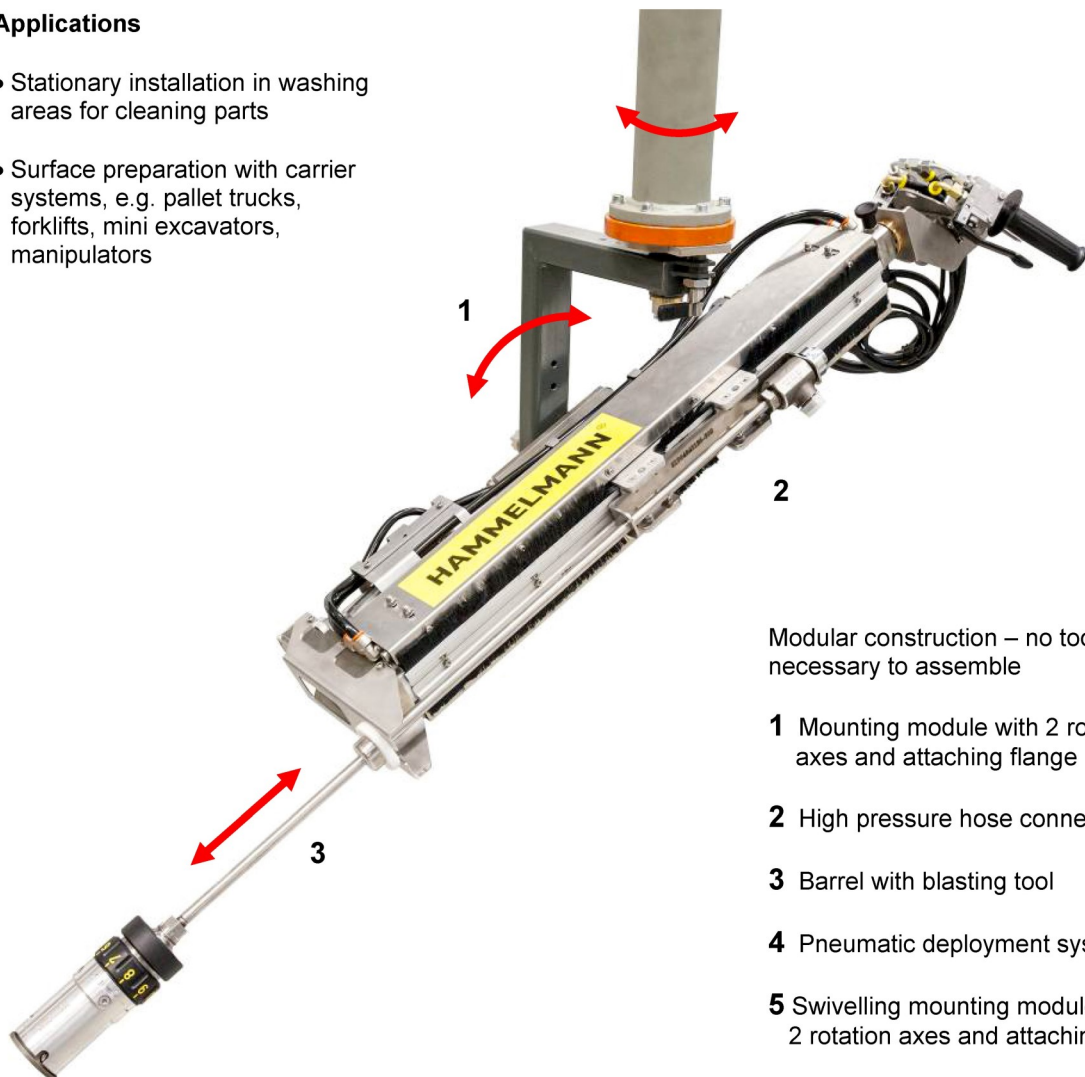


Reaction force free working with JETMATE

Jetmate - applications

Applications

- Stationary installation in washing areas for cleaning parts
- Surface preparation with carrier systems, e.g. pallet trucks, forklifts, mini excavators, manipulators



Modular construction – no tools necessary to assemble

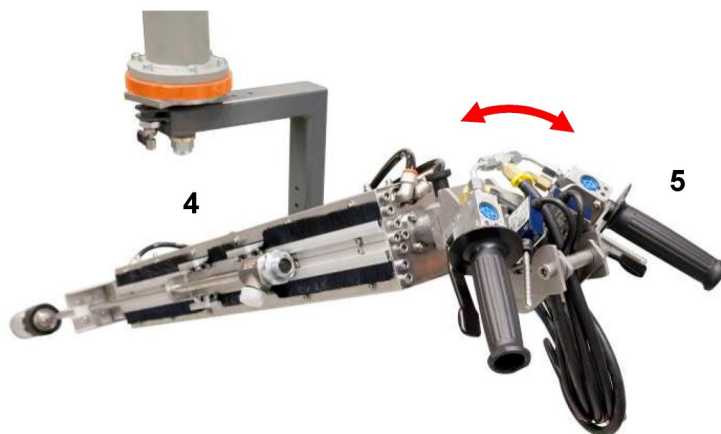
1 Mounting module with 2 rotation axes and attaching flange

2 High pressure hose connection

3 Barrel with blasting tool

4 Pneumatic deployment system

5 Swivelling mounting module with 2 rotation axes and attaching flange



Jetboy & Jetmate

Ergonomic Waterjetting Tools



+44 1905 751790

sales@calder.co.uk

www.calderltd.com



CALDER

HAMMELMANN®