

OPTIONAL EQUIPMENT

DERC TUBE BUNDLE ROLLER

The DERC Tube Bundle Rollers are heavy duty rollers for any bundle up to 20,000 kg. Designed by our own engineers and manufactured from high quality materials. These rollers rotate pipe bundles during cleaning.

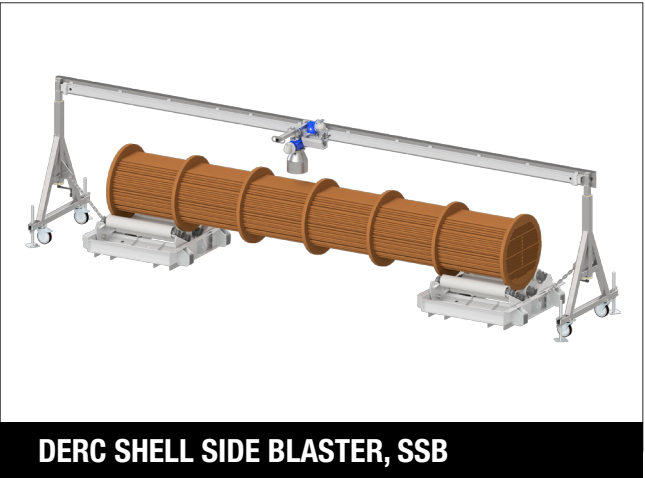
The DERC Tube Bundle Rollers come as a set of 2. Each set has 4 rollers, to ensure a good support of the bundle. On one of the two sets the 4 rollers are driven. The rollers on the other set follow (no drive). The drive engine can be driven either pneumatic or hydraulic.



DERC TUBE BUNDLE ROLLER

DERC SIDE SHELL BLASTER

The SSB is designed and manufactured by DERC Salotech as an automated solution for external cleaning of heat exchangers with high pressure water jets. The SSB makes tube bundle blasting of shell side cleaning simple and safe, placing the operator at a safe distance out of the line of fire!

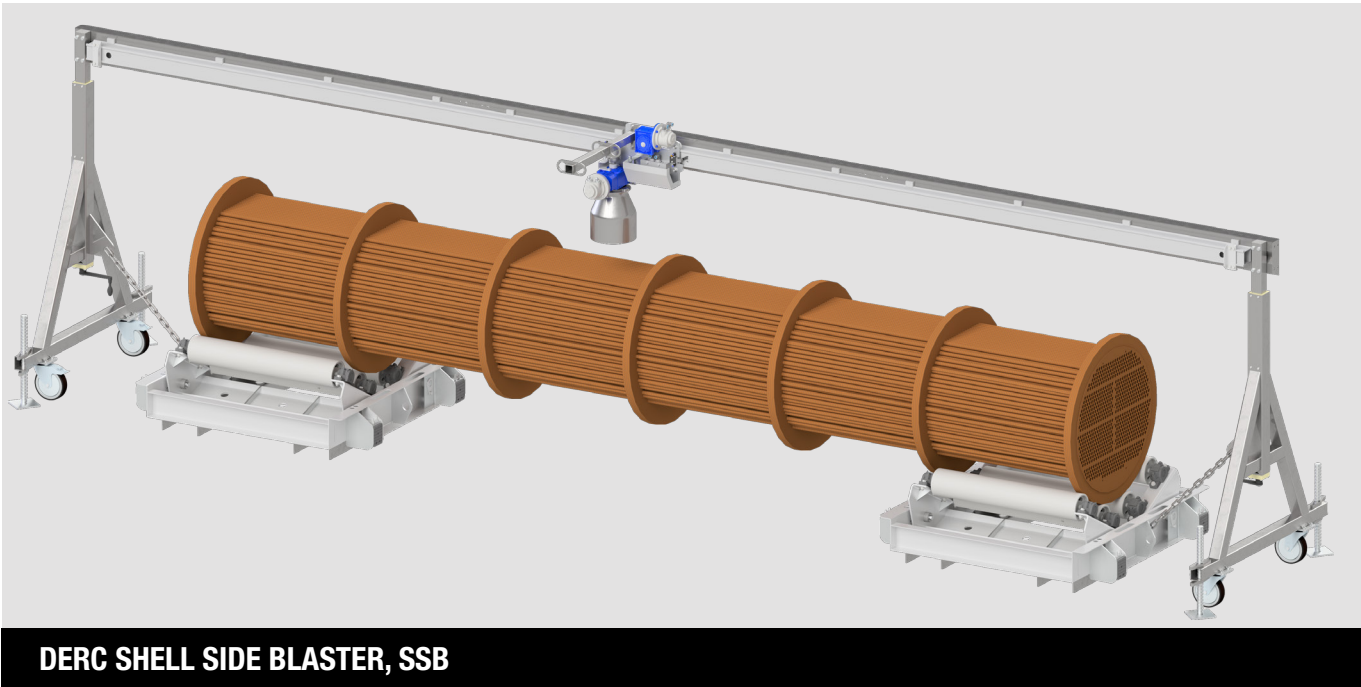


DERC SHELL SIDE BLASTER, SSB

The SSB consists of two wheeled frames, which can be placed over the heat exchanger, and adjusted in height by means of two manually operated hand wheels. The system comes with two tensioner chains to secure the frames to your tube bundle rollers.



DERC RIGID LANCE CLEANING SYSTEM, RLC



DERC SHELL SIDE BLASTER, SSB

DERC SALOTECH – ORIGINAL EQUIPMENT MANUFACTURER AND SUPPLIER OF INNOVATIVE HIGH PRESSURE WATER JETTING SOLUTIONS, AUTOMATED EQUIPMENT AND ACCESSORIES. WE PROVIDE STATE OF THE ART KNOWLEDGE AND SERVICES.



DERC Rigid Lance Cleaning System RLC

- + MODULAR DESIGN
- + CONFIGURE TO ORDER
- + REMOVAL OF HARD PLUGS AND SCALING
- + SAFE AND FAST CLEANING

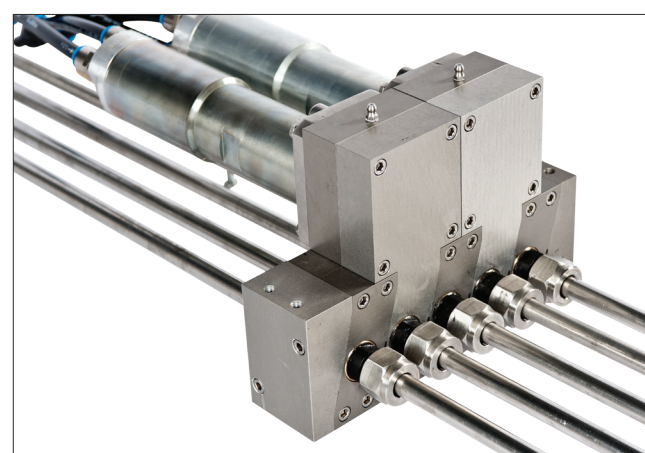
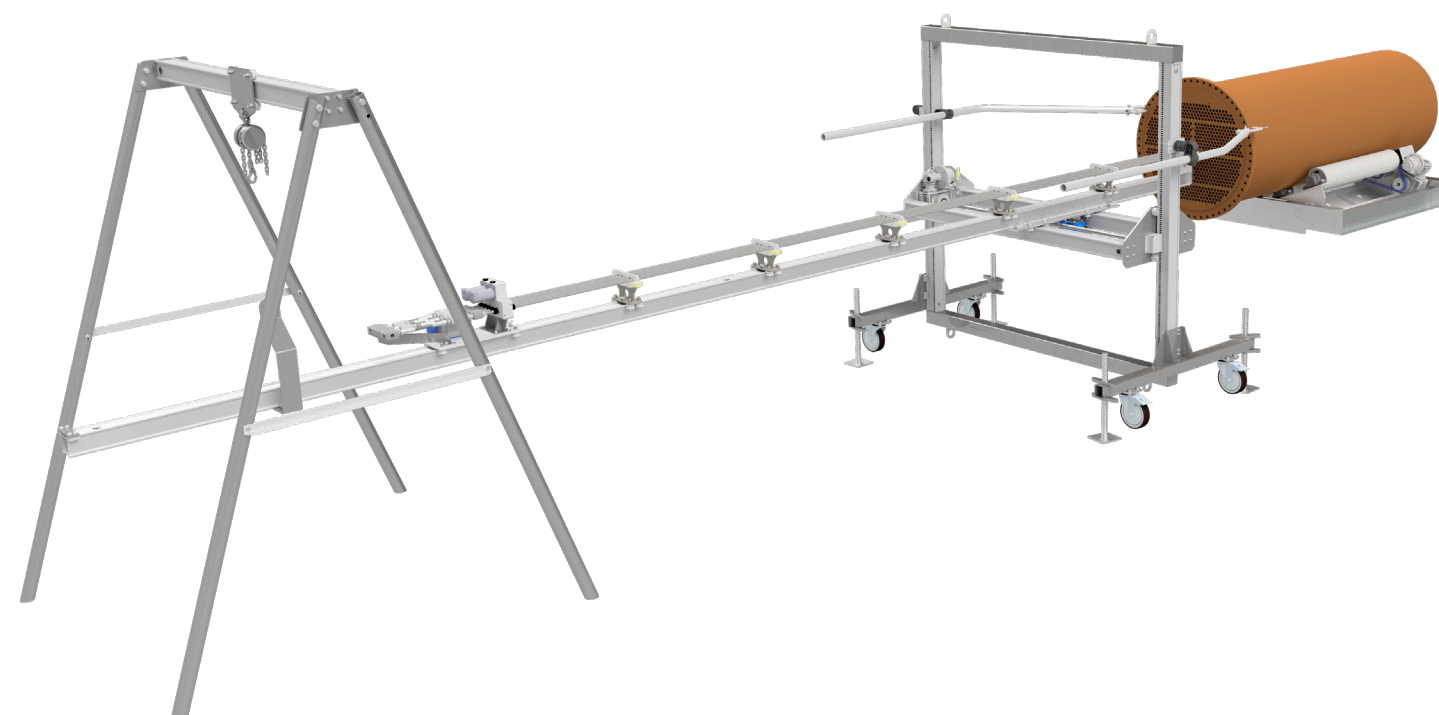
**MADE BY
DERC**

DERC Rigid Lance Cleaning System

The DERC Rigid Lance Cleaning System is an innovative ridged lancing system to clean heat exchanger tube bundles by means of (ultra) high pressure water jets. The RLC is a modular designed machine easy to adapt to any length and suitable for a maximum working pressure of 3000 bar. The RLC is the machine for removal of hard plugs, scaling and general cleaning of heat exchangers.

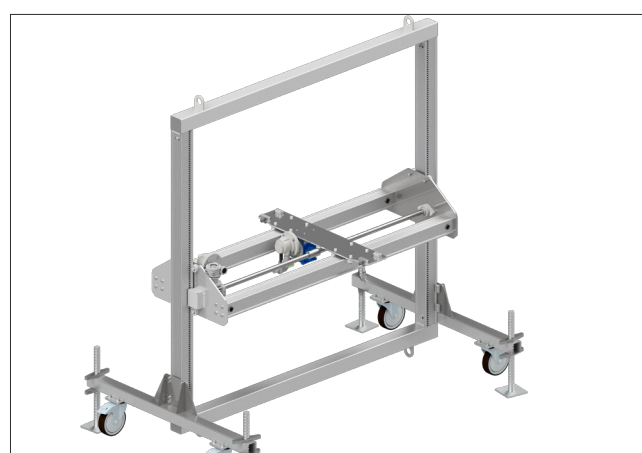
The basis of the RLC system is an aluminum rail with gear rack on which a modular rotating lancing carriage drives the lances in and out the heat exchanger tubes. For positioning the lances in front of the heat exchanger the RLC system comes with an X-Y Positioner. This X-Y Positioner consists of a removable wheel kit, support stands / legs and scaffolding guides for vertical application. For stability the RLC system can be equipped with a rear support for both horizontal and vertical applications.

On the lance carriage you will find our Modular Lance Rotation Drive Unit. This modular block can be converted to rotate 1, 2, 3 or 5 high pressure lances in any pressure range. For controlling all the functions of the RLC system the machine comes with an operating panel, placing the operator out of the line of fire. The RLC system is standard fully air powered, however on request we can offer a hydraulic version of the system.



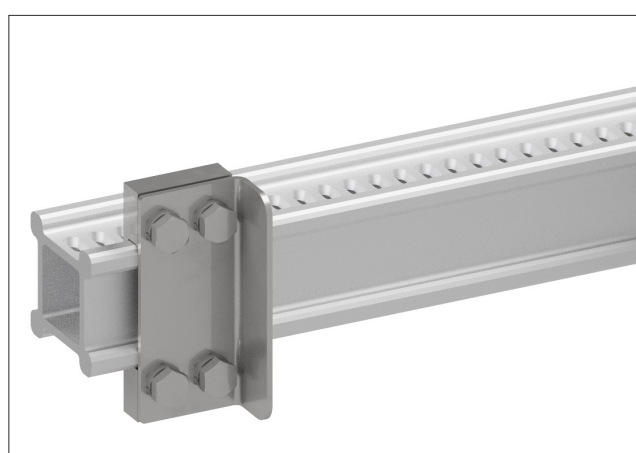
DERC MODULAR LANCE ROTATION DRIVE UNIT

- + Modular design
- + Includes motor for 600 rpm
- + As many lances as needed
- + unique small pitch distance



X-Y POSITIONER

- + X-Y Positioner
- + Stainless steel, aluminium
- + Wheels and supports
- + Complete with braces and c-clamps



DERC AUTOMATED SOLUTIONS RAIL

- + Manually adjustable for limiting the power on the lances
- + Strong and reliable
- + Endless possibilities
- + For tough applications



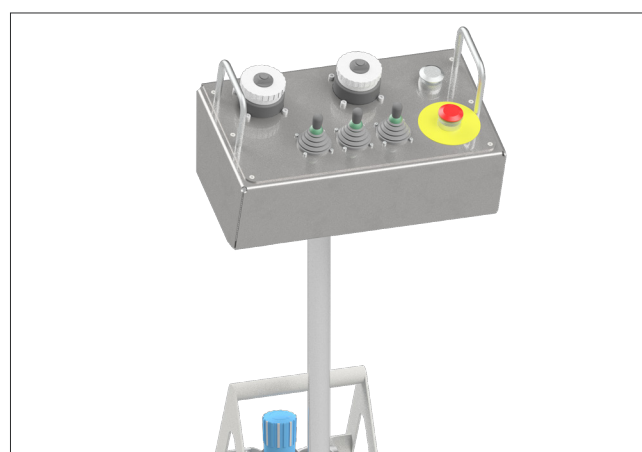
DERC NOZZLES

- + Long life cycle, highly effective
- + Configured per order
- + Short delivery time
- + Excellent value for money



REAR SUPPORT A FRAME

- + Heavy duty rear support
- + Stainless steel, aluminium
- + CE marked chain hoist
- + Easy to transport



OPERATING PANEL

Control Panel to operate Ridged Lance Cleaning System out of the line of fire.

- + Lance in/out and speed
- + Lance rotation and speed
- + X-Y positioning



LANCE GUIDE BLOCK

- + Stainless steel base with 4 roller bearings for easy transportation over the Aluminum rail.
- + Coiled spring
- + Replaceable guide block
- + Suitable for 1/2/3/5 lances



RIDGED LANCES

DERC Salotech manufactures a wide range of tube sizes, ranging from from 1/4" (6.35mm) up to 9/16" (14.43mm).

- + Stainless steel
- + Max. working pressure 4000 bar