

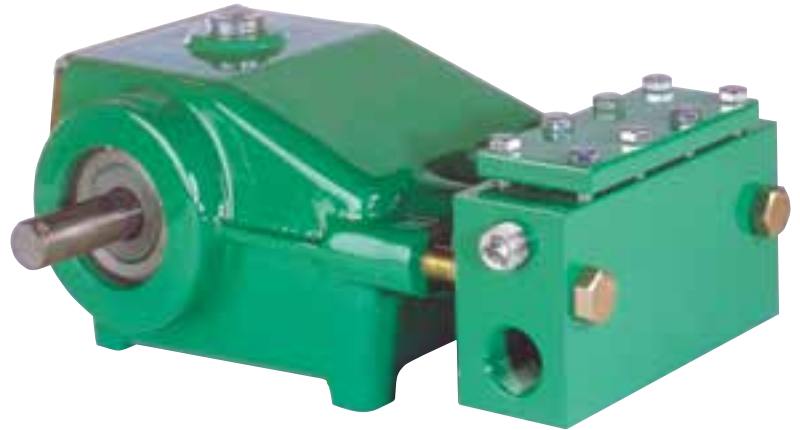
MYERS® MODEL BXM

High Pressure Reciprocating Pump

Understanding Your Needs

The Myers BXM series combines manufacturing expertise and understanding of applications to provide a pump with strength and versatility for any demanding high-pressure job.

Contact your Pentair sales representative or customer service at 419-289-1144 for more details.



Wide Performance Range

- 3–8 gpm (11.4–30.3 lpm)
- Up to 1500 psi (103.4 bar)

Rugged design for continuous operation

- Solid one-piece cast iron power end.
- Extra-large oil sump for superior lubrication.
- Steel fluid end or optional aluminum bronze for long, corrosion-resistant life.

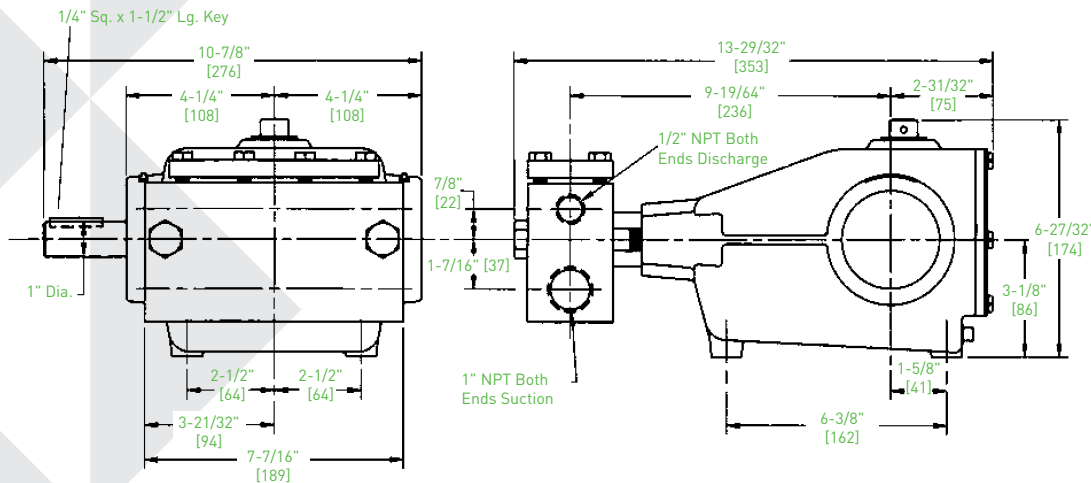
Designed for Simple, Routine Maintenance

- Easy access to suction and discharge valves – no need to remove pump from system.

Whisper Quiet Operation

- Oversized spherical suction and discharge valves allow complete filling of cylinder.

Dimensional Data [Dimensions in mm]



Product Capabilities, Specifications

Catalog Number	Max. Rated Capacity	Max. Rated Pressure	Temp. Rating °F (°C)	Approx. Weight (lbs. (kg))	Sizes in inches (mm)					
					Cylinder Bore	Piston Stroke	Suction Size NPT	Discharge Size NPT	Input Shaft	Keyway
BXM6-15	8 gpm 30.3 lpm	1500 psi 103.4 bar	140 (60)	60 (27.2)	1 (25.4)	1-1/16 (26.99)	1 (25.4)	1/2 (12.7)	1 (25.4)	1/4 x 1/8 (6.35 x 3.18)

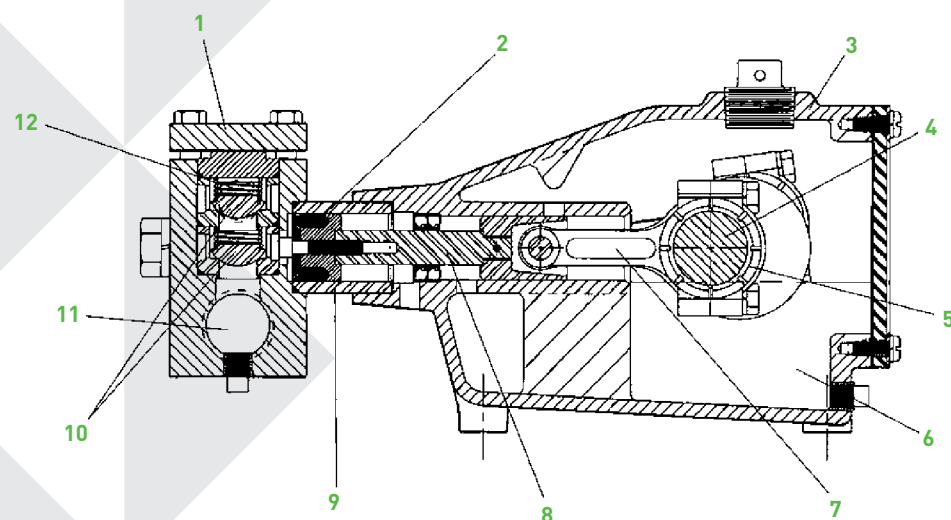
Note: Consult factory for applications outside of these recommendations.



WWW.FEMYERS.COM

Fluid End

1. **Body** – Steel monoblock optional aluminum-bronze.
2. **Piston Assembly** – Fabric reinforced nitrile V-ring with aluminum-bronze piston.
3. **Body** – Solid one-piece, cast iron crankcase. Acrylic window for oil level monitoring.
4. **Crankshaft** – Automotive-type ductile iron. Standard is right-hand drive. Left-hand drive available.
5. **Main Bearings** – Ball bearings for crankshaft.
6. **Continuous Splash Lubrication.**
7. **Connecting Links** – High-strength zinc alloy for durability.
8. **Crossheads** – High-strength zinc alloy.
9. **Cylinder Liners** – Alumina-ceramic.
10. **Valve Assemblies** – Three-piece stainless steel for less maintenance.
11. **Inlet** – 1" NPT both sides.
12. **Discharge** – 1/2" NPT both sides.



Horsepower Requirements

BXM								
GPM [LPM]	RPM	Horsepower required for psi [bar]:						
		200 psi [14]	400 psi [28]	600 psi [42]	800 psi [56]	1000 psi [70]	1200 psi [83]	1500 psi [103]
3 [11.4]	300	0.4	0.9	1.3	1.8	2.2	2.7	3.3
4 [15.1]	400	0.6	1.2	1.8	2.4	3.0	3.6	4.4
5 [18.9]	500	0.7	1.5	2.2	3.0	3.7	4.4	5.6
6 [22.7]	600	0.9	1.8	2.7	3.6	4.4	5.3	*NR
8 [30.3]	700	1.0	2.1	3.1	4.2	5.2	6.2	*NR

*Not recommended. Consult factory for requirements beyond published performance data.
Power based on 85% mechanical efficiency. Displacement is based on 100% volumetric efficiency.

CALDER

+44 1905 751790
sales@calder.co.uk
www.calderltd.com