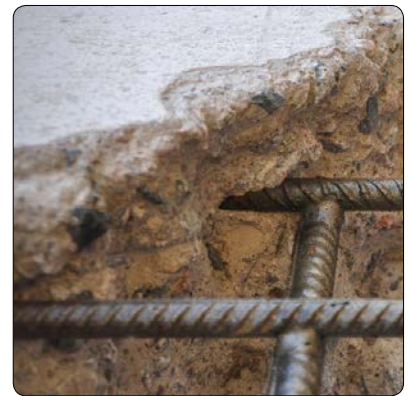


## Water Blast Protection HD



**CONCRETE HEAVY DEMOLITION**

**50% STRONGER**

**ON ABRASION AND TEAR**



UNIQUE PROTECTION EQUIPMENT

# HD Heavy Demolition

## Concrete

## Top comfort



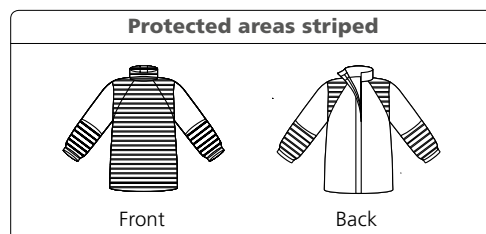
### JACKET WITH HAND PROTECTION HD

The Jacket provides effective full front protection as well as around the neck and shoulders. It also has integrated Hand Protection. Outer material HD is extremely durable TECHSTEEL™ which is 50% more resistant to abrasion and tear! Request for these qualities comes originally from the industry of concrete removal and demolition. Ideally combined with Trousers and Gaiters or Boots 3000 for maximum protection.

Weight 3.0 kg / 6.6 lbs. (Jacket 20/30, L/XL).

Size S/M, L/XL, 2XL/3XL.

Art. No. Jacket HD 20/30 5122068 5085



### GAITERS HD

The Gaiters are to be worn outside of the user's regular protective boots. The entire area round the leg and the foot is protected. Outer material HD is extremely durable TECHSTEEL™ which is 50% more resistant to abrasion and tear! Three clips and velcro in the rear, and an easily adjustable strap under the sole, ensures that the Gaiters stay in place. Very comfortable and light to wear. Sold in pairs.

Weight 1.5 kg / 3.3 lbs per piece.

One size.

Art. No. 5158068 5085

**TECHSTEEL™**

Elastic, soft and comfortable shoulder band.

Belt that helps to distribute weight – for better fit and higher comfort!

Optional ventilation

## TROUSERS HD

The Trousers are fitted with full front protection up to the waist. Outer material HD is extremely durable TECHSTEEL™ which is 50% more resistant to abrasion and tear! The zips on the outside of the legs are protected by a sealing flap and a velcro flap. Wide, adjustable braces in stretch material. Elastic part in the rear waist and a belt which helps to distribute weight and improves the comfort. Trousers are suitable for workers who move a lot, climb or crawl. This HD version is especially designed for the toughest environments.

For work in warm environments Trousers can be ordered with ventilation, which distributes fresh air in the legs and up in the front. Needs hook up to a compressor. Trousers are preferably used in combination with Jacket and Gaiters or Boots 3000.

Weight 3.0 kg / 6.6 lbs. (Trousers HD 20/30, L/XL).

**Size** S/M, L/XL, 2XL/3XL.

**Art. No. Trousers HD 20/30** 5132068 5085

**Optional Ventilation** 5198000 5030

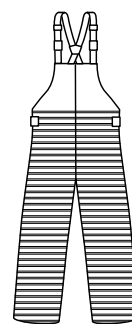


### AVOID HEAT STRESS

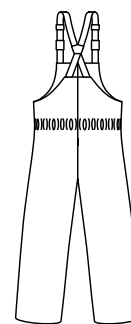
Ventilation – an option for comfort in warm environments.



### Protected areas striped



Front



Back

Very good durability with a coated Kevlar® band.



Two flaps protect the zipper.



# Protection up to 3000 bar/43500 psi

## TECHNICAL DESCRIPTION

Outer material: Extremely durable TECHSTEEL™ fabric which is reinforced with Vectran®.

Inner material: Polyester mesh. Protective material: Special fabric containing Dyneema® fiber. Seams: Taped. Washing instructions: TST Special Grease Remover.

CE-marking: Approved according to the directive 89/686/EEC and BGR 191, verified by Notified Body.



Dyneema® is a registered trademark of Royal DSM N.V.

## TEST RESULTS FOR CLOTHING

The different levels of protection have been determined by testing according to the table below. The tests are performed both for a pin/single nozzle, which is the most aggressive, and for rotating nozzles which are more common. All to be as relevant as possible for the user.

Note! Different values (pressure, water flow, nozzle, distance, speed) can give significantly different results!

Protection level	Pressure bar (psi)	Flow l/min (gpm)	Nozzles		RPM	Distance mm (in.)	Linear Speed m/s (in./sec)	Result
			n	Dia. mm (in.)				
10/28	1000 (15000)	19.8 (5.2)	1	1.0 (.039)	–	75 (3)	0.5 (20)	No penetration
10/28	2800 (40000)	18.8 (5.0)	2	0.6 (.024)	3000	75 (3)	0.5 (20)	No penetration
20/30	2000 (30000)	17.9 (4.7)	1	0.8 (.031)	–	75 (3)	0.5 (20)	No penetration
20/30	3000 (43500)	19.5 (5.2)	2	0.6 (.024)	3000	75 (3)	0.5 (20)	No penetration

Sizes (men's)		
Trousers and Jacket	Height cm (ft. in.)	Chest cm (in.)
S/M	<186 (<6'1")	85-100 (33"-39")
L/XL	187-192 (6'2"-6'4")	108-116 (43"-46")
2XL/3XL	193-206 (6'4"-6'9")	124-132 (49"-52")

Conversion table for shoe sizes		
EUR	US	UK
42	9	9
43	9 1/2	9 1/2
44	10	10
45	10 1/2	10 1/2
46	11	11
47	12	12
48	13	13

Certified according to ISO 9001:2008 and ISO 14001:2004



UNIQUE PROTECTION EQUIPMENT

**CALDER**

+44 (0) 1905 751790  
sales@calder.co.uk  
www.calderltd.com

**Linked in**