

WATER RECYCLING

MFD_R200



CALDER

MOBILE FILTRATION



Advantages

- Cost savings through lower treatment and disposal costs
- Flexibility and mobility
- Simple logistic
- Autarkic water supply
- Operator friendly
- Innovative technology
- Eco-friendly
- Monitored water management



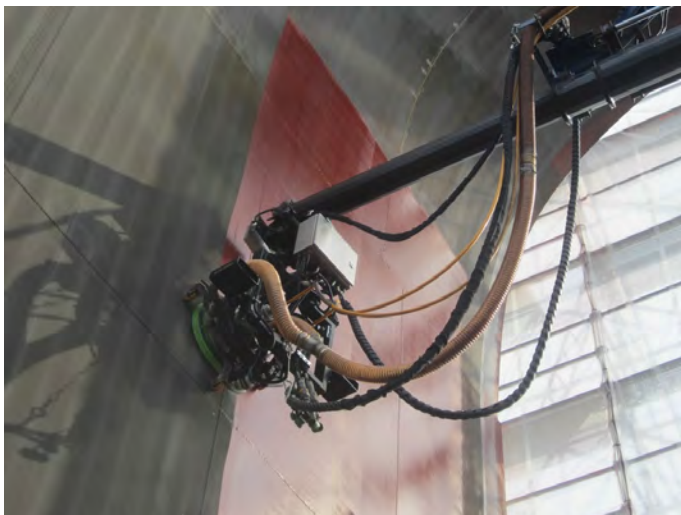
REPROTEX: Unique Technology for Ship Hull Surface Preparation by Water Jetting

The use of high pressure water jetting is becoming more and more significant for all kinds of ship hull treatment in marine industries worldwide.

Reprotex is the problem-solver for waste water coming from these kinds of operations: Our system is able to handle a wide range of highly diverse waste water qualities.

As the result of the Reprotex-treatment You can either reuse the recycled water in Your UHP-pump in a closed loop, or drain it environmentally friendly (sewage system/back to nature).

Our fully electronic controlled system operates automatically and provides needs-based reports on flow rates and pH-value.



The Waste water-Recycling-Process

Waste water after jetting-operations (HP-washing or UHP –blasting with water) is pumped from an external collection tank into the container-based treatment device. In a first treatment step the waste water is mixed with a flocking agent in order to accelerate the separation- process of suspended solids in the lamella clarifier. Following this, there are further two fine-filtration units (sand filter und textile-filter), which ensure the result particle-size < 1µm.

An integrated digital sensor monitors permanently the pH-value and ensures automatically neutralisation by using CO₂, if necessary. Thus release of water in accordance with legislation in terms of pH-value (pH 6,5 to 9) can be guaranteed.

In the case of chemical pollutants Reprotex can be combined with additional waste water treatment technologies (e.g. oil-separator, active carbon, ion-exchanger).

MFD_R200

Mobile Filtration Device Recycling 200 l/min

Performance:	12m³/h (up to, stepless adjustable)
Recycling/Discharge	selectable
Recycling-Mode:	Sand filter - Bag filter 1µm (nominal)
Discharge-Mode:	Bypass of the filter units
pH-value Neutralisation:	CO2 (for alkaline waste water)
pH-value Monitoring	Data recording
Container:	20' (ISO Dimensions, LxWxH, 6,058m x 2,438m x 2,591m)
Electrical connections:	3x400V / 50Hz
Electric Power:	8 kW
Weight:	5.500 kg



Calder Ltd
Prescott Drive
Worcester
WR4 9NE
United Kingdom

+44 1905 751790
sales@calder.co.uk
www.calderltd.com

CALDER