

# DOCKMASTER® 3000



## Semi automatic UHP water blasting vehicle for ship hull surface preparation.

The Dockmaster® is a completely **dust free**, eco friendly alternative to dry open abrasive blasting capable of preparing hull surfaces to the most exacting standards applicable today.

Using pressures varying between 2500 and 3000 bar up to 150 sq. metres per hour of surface can be prepared to NACE/SSPC standards WJ1/SC-2.

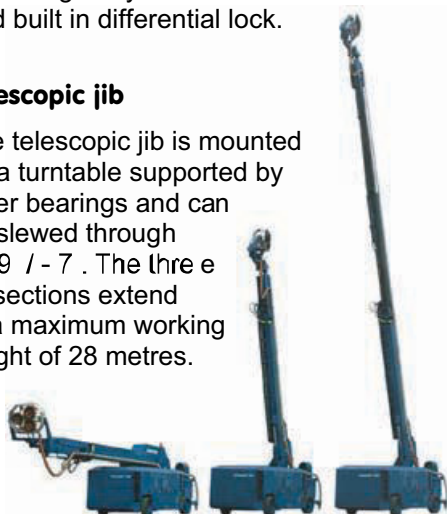


### Chassis

The torsion free chassis with solid rubber tyres is designed for absolute maximum stability. Front and rear axles have independent steering guaranteeing maximum manoeuvrability in the often narrow space between hull and dock wall or through dock access ways. The unit is driven via the twin rear axles with integral hydraulic motors and built in differential lock.

### Telescopic jib

The telescopic jib is mounted on a turntable supported by roller bearings and can be slewed through +19 / -7°. The three jib sections extend to a maximum working height of 28 metres.



### Aquajet® 48

Ultra high pressure pump unit, diesel powered

Op. pressure: 2600 bar  
Flow rate: 88 l/min  
Power rating: 450 kW

Op. pressure: 3000 bar  
Flow rate: 74 l/min  
Power rating: 450 kW



### Calder Ltd

web : [www.calderltd.com](http://www.calderltd.com) tel : +44 (0) 1905 759090  
email : [sales@calder.co.uk](mailto:sales@calder.co.uk) fax : +44 (0) 1905 759091

# DOCKMASTER® 3000



## UHP water blasting system with vacuum and waste water filter/recovery module

The 860 mm working width UHP blasting head is a triple Hammelmann AQUABLAST® incorporating hydraulically powered spray bars mounted on leakage free sealed rotary joints

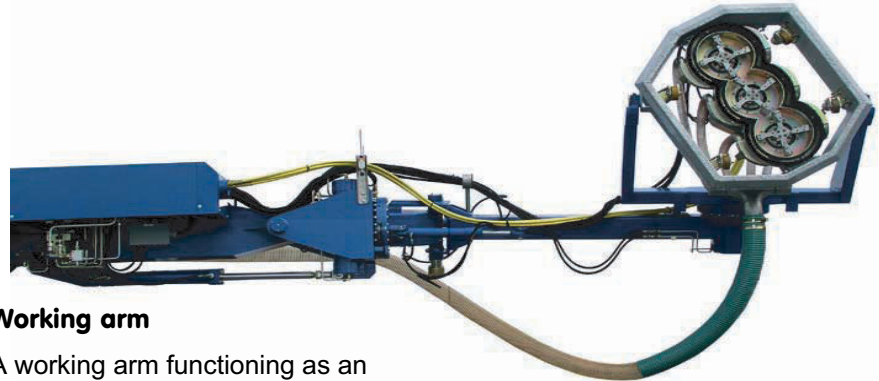


The blasting head seals directly onto the hull surface and is connected to the vacuum unit via a hose/pipework combination

The waste water containing removed solids is vacuumed into the filter/ recovery module where the separated solids are retained for disposal.

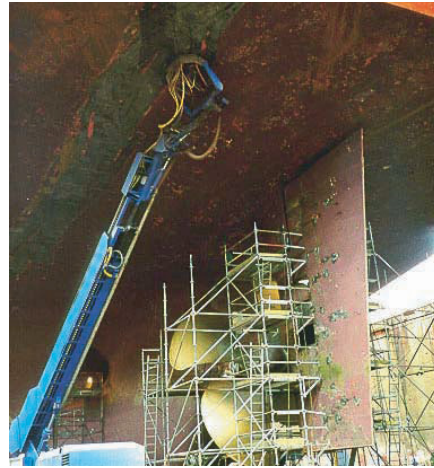


**Calder Ltd.** Prescott Drive  
Warndon  
Worcester  
WR4 9NE  
United Kingdom



## Working arm

A working arm functioning as an equipment carrier is installed at the tip of the telescopic jib.



The blasting head can be swivelled so that both horizontal and overhead surfaces can be cleaned.



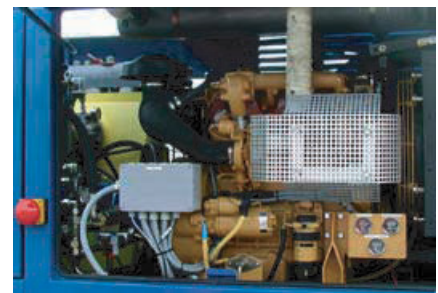
## Radio remote control

The Dockmaster® is operated by portable remote control.



The pretreated used water can either be released onto the dock floor using the waste water pump, or collected in vessels or tanks via a hose. A second hose reel with 80 metres of hose is provided for the latter option.

## Hydraulic system with ECO oil



The hydraulic installation comprises two independent circuits each powered by a pump. The system is controlled by proportional valves, solenoid valves, pressure limiting valves combined with hydraulic motors and hydraulic cylinders. The hydraulic pumps are driven by a water cooled CAT diesel engine.

web: [www.calderltd.com](http://www.calderltd.com)  
email: [sales@calder.co.uk](mailto:sales@calder.co.uk)  
Phone: + 44 (0) 1905 759090  
Fax: + 44 (0) 1905 759091

